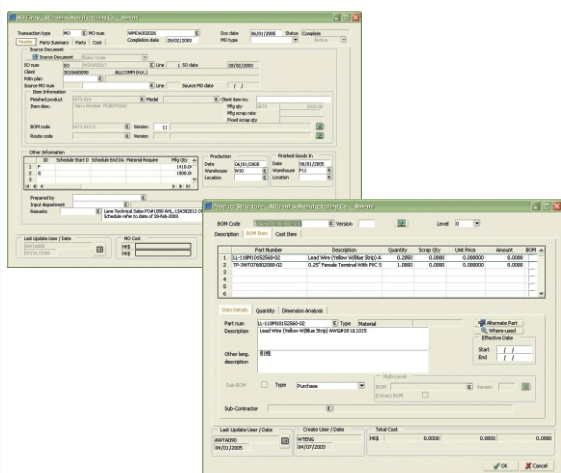


V10 Material Control

V10 Material Control Management provides comprehensive and integrated production capabilities for handling material flow. The system allows you to combine many types of production in the same operation, with unlimited flexibility to choose the best method or combination of methods. With complete engineering data management, you can handle the entire process of defining, approving and executing engineering change notes. The system provides full control of BOM so you can always meet customer demand without interrupting the production. In addition, the system provides extensive information to help you identify cost drivers and reduce product costs effectively.



- ◆ Effective data entry through easy to read UI, high speed keyboard operation, data lookup assistant and complete data validation
- ◆ Support popular SQL database
- ◆ Multi-company, multi-currency, unlimited customer, supplier and product database
- ◆ Ultra Thin-Client for enhanced security, low bandwidth connection and fast remote reporting
- ◆ EI - the powerful analysis tool with multi-level and multi-dimensional view of aggregate data to provide quick access of quality data and important information for management decision

Key Features

- ◆ Create production orders through planned production orders in master planning schedule
- ◆ Production Orders can be created from sales orders as standard, project, or multiline
- ◆ Issue materials from multiple warehouse
- ◆ Complete pending flow, including scrapping materials and return materials back to the warehouse
- ◆ Stock performance analysis
- ◆ Multiple inventory costing methods such as FIFO, LIFO, Lot, standard unit cost and month end moving average cost
- ◆ Cost entries against each production order
- ◆ Support multiple production orders to be grouped for scheduling
- ◆ Receive partial shipments from supplier with automatic backorders
- ◆ Pre-costing bill of materials
- ◆ Master bill of materials
- ◆ Non-raw materials cost calculation
- ◆ Engineer Changes Notes is provided to change the BOM setting
- ◆ Calculate production cost during or after the production cycle
- ◆ Track actual production costs against estimated BOM cost
- ◆ Automatically generate sub-contract order from production order or purchase order
- ◆ Support sub-contract work and rework
- ◆ Track the status of sub-contracting assembly by defining the sub-contracting assembly and manufacturing orders
- ◆ Multi-dimensional tracking is provided to monitor the production status
- ◆ Full comprehensive reports
- ◆ Send / receive action message through build-in Message Center



Microsoft
GOLD CERTIFIED
Partner