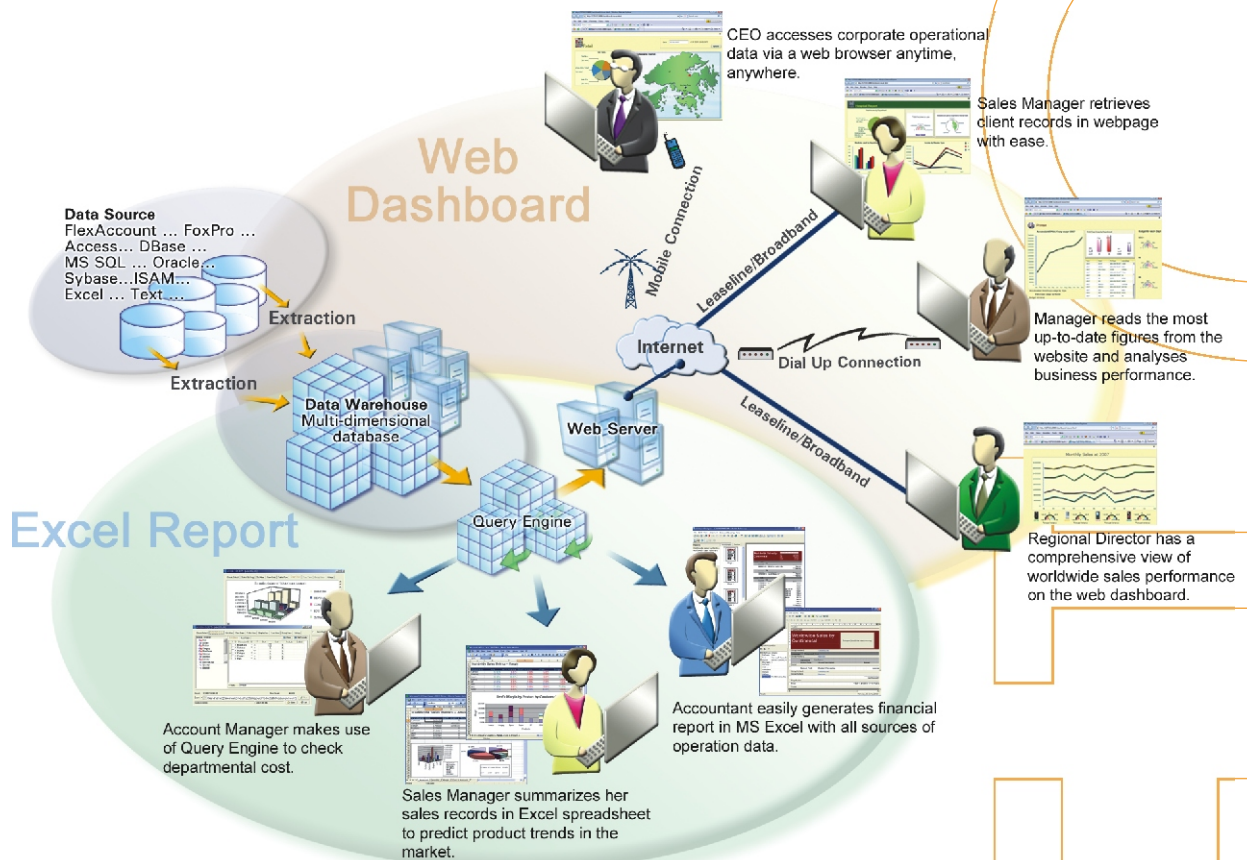


**Enterprise Information Support System QX Version**

Financial Management	Material Control	Purchase Order	SQL	Ultra Thin-Client	Sale Order
ERP	Human Resources Management	Flash	<b>EI<sup>QX</sup></b>	Inventory	
Dashboard	Financial Information ON-line (FION)	JAVA	Workflow	Enterprise Software Architecture	

**FlexSystem EI<sup>QX</sup> .... Enterprise-class Query Engine**

*EI<sup>QX</sup> is an enterprise-class query engine that provides powerful and integrated platform to easily explore, extract, transform and deliver valuable data for operational reporting, query and analysis. It enables the management to gain insight into numerous operational data and quickly identify the factors to optimize revenue and improve operational efficiency. EI<sup>QX</sup> is best fit with today's organizations who seek for unlock their data assets and improvement of overall business performance.*



# FlexSystem EI<sup>QX</sup> .... Enterprise-class Query Engine

## Need for EI<sup>QX</sup>

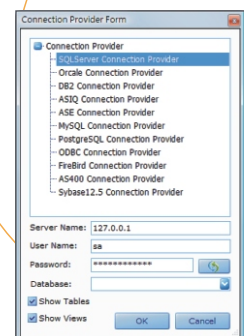
It is a fast-moving and information-driven business world nowadays. Managers and analysts require complete real-time information to make quick and accurate decision that increases both internal efficiency and marketplace competitiveness. However, consolidating all the enterprise information is difficult in most companies because key operational data sources are usually stored in different nonintegrated repositories. Unless these disparate sources of valuable data are integrated and analyzed, a single comprehensive view of business performance can be obtained for effective management and well-informed decision making.

An important goal of EI<sup>QX</sup> is to provide the right information, to the right person, at the right time. It enables companies to integrate, analyze and personalize critical enterprise information to improve business performance and responsiveness. EI<sup>QX</sup> provides secure, easy-to-use, zero footprint reporting, ad hoc query, dashboarding and data integration capabilities to address the needs of the company who is looking for high level of business insight.

## Benefits of EI<sup>QX</sup>

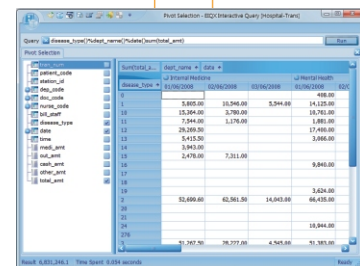
### Multiple Data Sources Support

EI<sup>QX</sup> is a data integration platform which supports data extraction and transformation from heterogeneous application systems across the entire enterprise, such as accounting, trading, manufacturing, payroll and CRM systems. It enables consolidating data from multiple sources in different formats, like Sybase, Oracle, DB2, MS SQL, OLE-DB, ODBC, ISAM, Excel spreadsheet and even other unstructured data files. The high level of data source flexibility gives user universal access to all information related to their business to have a comprehensive view of the performance.



### Agile Architecture

The architecture of EI<sup>QX</sup> is specially designed to deliver high performance to address the scalability and flexibility requirements of the most demanding business environment. EI<sup>QX</sup> provides unmatched flexibility in leveraging software/hardware resources to achieve top performance during extraction, transformation and loading (i.e. ETL processing) of enterprise data. Since it utilizes the server resources and the data size is being significantly minimized, all users can enjoy the smooth computation simultaneously while they are retrieving and calculating the enterprise information.



Line	Account	Account	Account	Account	Account
1	5,802.00	16,246.00	5,844.00	14,125.00	4,488.00
2	15,344.00	3,790.00	18,750.00	18,750.00	18,750.00
3	7,244.00	1,170.00	1,480.00	1,480.00	1,480.00
4	29,209.00		17,480.00		
5	5,415.00		3,460.00		
6	3,943.00		3,211.00		
7	2,478.00		9,840.00		
8			3,624.00		
9	32,499.00	62,561.00	14,043.00	66,435.00	
10				18,944.00	
11					18,944.00
12					
13					
14					
15					
16					
17					
18					
19					
20					
21					
22					
23					
24					
25					
26					
27					
28					
29					
30					
31					
32					
33					
34					
35					
36					
37					
38					
39					
40					
41					
42					
43					
44					
45					
46					
47					
48					
49					
50					

### Enterprise Security

EI<sup>QX</sup> provides various security measures to ensure the data is well-protected, such as data encryption and user authentication. It also applies user authorization down to record level, so as to define the data protection in more detailed level.



# FlexSystem EI<sup>QX</sup> .... Enterprise-class Query Engine

## Generic Multi-Dimensional Analysis

The core of EI<sup>QX</sup> lies within its analytical power, whereas giving user a multi-dimensional view on the data source, thus help examining their business operation from a multi-angle viewpoint. The system is empowered by its simple and powerful query statement, in which complicated queries are effectively structured into a simple expression. Therefore, users can have intuitive data navigation in a boundless manner with the greatest ease.

## Task Management

In EI<sup>QX</sup> Task Management, user can set up program to monitor the data and perform different tasks according to the defined schedule. For example, you may set the time for the extraction and transformation to process during the non-office hours, then automatically generate the reports across the network and deliver email notification. All the updated information is already available when the user gets back to office in next day. It helps user to arrange the tasks in totally automatic manner without affecting the normal operation efficiency.

## Dashboarding

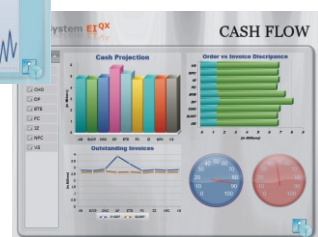
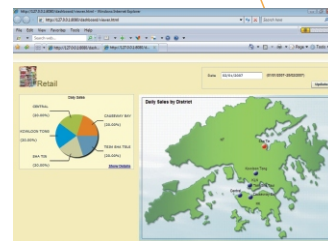
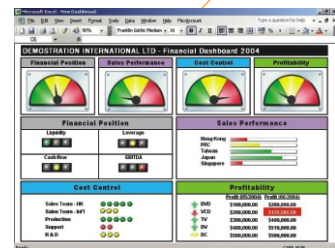
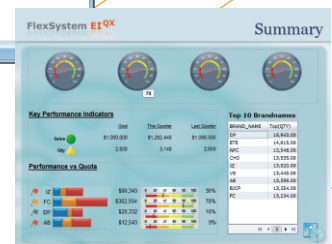
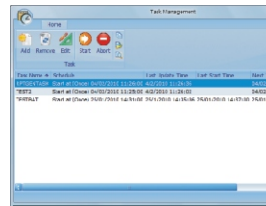
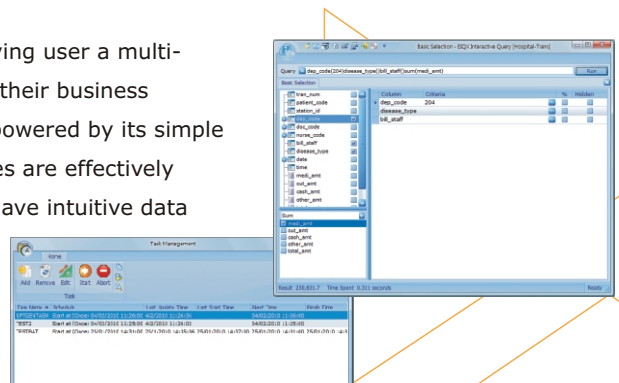
EI<sup>QX</sup> allows user to create and deliver a personalized dashboard environment for monitoring and analyzing metrics throughout the entire business. User can monitor, analyze and report the key performance in the dashboard based on cross-functional metrics.

## Web Deployment

EI<sup>QX</sup> delivers its reporting capabilities through a zero footprint, browser-based user interface. It allows the remote user to access the data and get every single detail of corporate data on Silverlight platform through Internet, breaking through the traditional workplace barriers. Thus, user can easily be in touch with business information within a web browser at anywhere and anytime.

## Easy to Use

On top of the intelligent query expression, plus the integration with Excel, EI<sup>QX</sup> is simple and easy to use that guarantees a minimal learning curve. Causal users with little technology background can easily learn and master every move and by its intuitive user interface to generate a sophisticated report independently. This is particularly important, as the management does not need to spend extensive hours on training but to analyze their data right away.



# FlexSystem EI<sup>QX</sup> .... Enterprise-class Query Engine

## Key Features

- Open connectivity with third party database / operation system
- Collect all levels of operation data to provide a complete insight of business performance
- Simplify query statement to make analysis from unlimited dimensions and angles
- Highlight key business issue in a customizable dashboard for operation monitor and improvement
- Integrate with popular applications to minimize the need of extensive training
- Automatically initiate system task according to user-defined schedule
- User can easily drill through from summary information to detailed transactions
- Multiple report output formats, such as XLS, TXT, CSV, XML and HTML etc.
- Build interactive, content-rich report with ease
- Secure control of user access right and authentication up to record level

## About FlexSystem

Founded in 1987, FlexSystem is a leading solution provider in Hong Kong. FlexSystem enterprise solution, which is supporting thousands customer around the world, enables organization to effectively and efficiently manage their business processes. Over the years, FlexSystem has come a far way to accumulate project experience and business knowledge, helping customer to improve the business agility. EI<sup>QX</sup>, is one of FlexSystem's flagship product, that offering customer to derive higher business value from all the existing enterprise information sources with innovative technologies and breakthrough performance.

